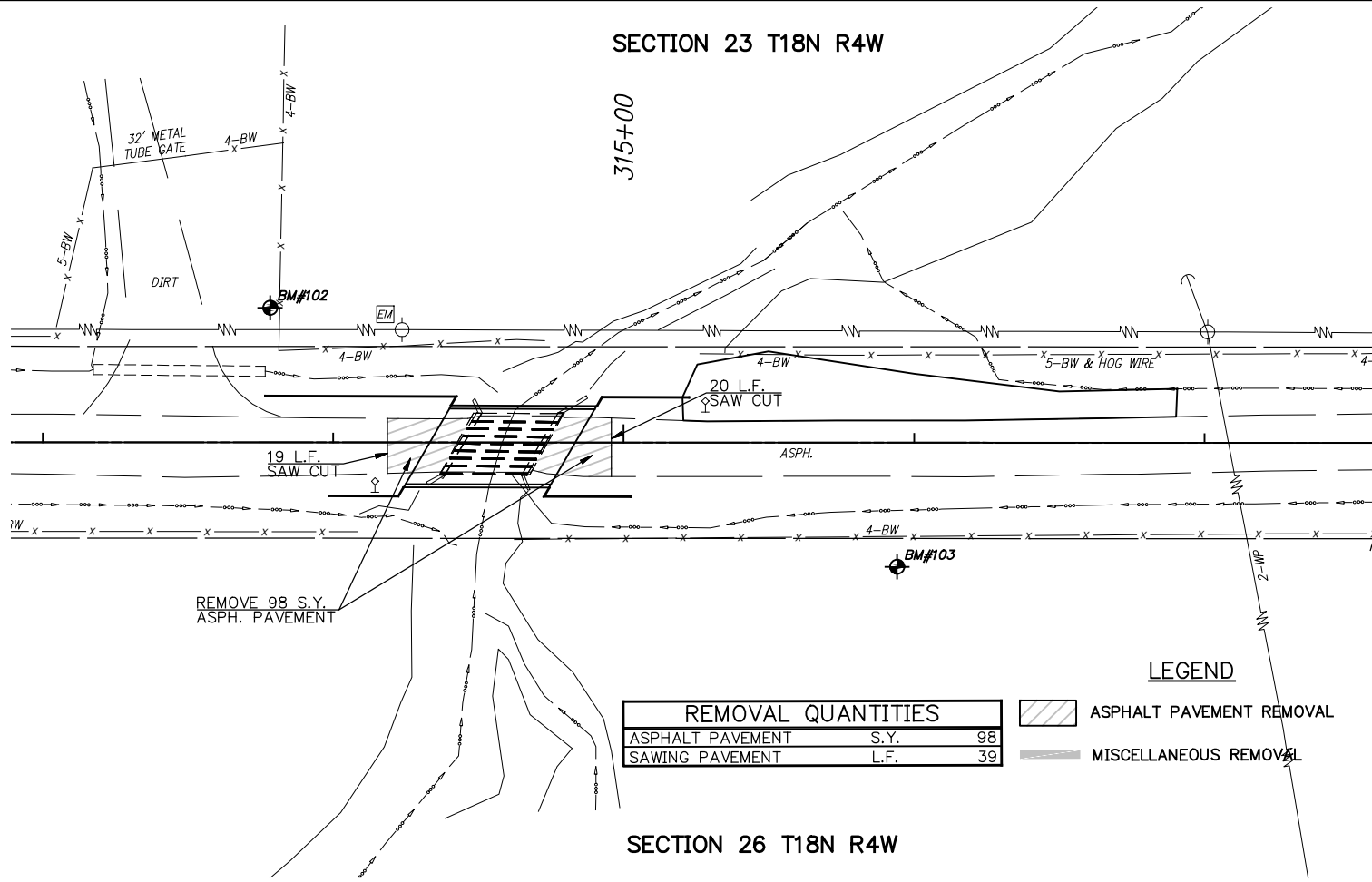


SECTION 23 T18N R4W

315+00



REMOVAL QUANTITIES	
ASPHALT PAVEMENT	S.Y. 98
SAWING PAVEMENT	L.F. 39

- LEGEND**
- ASPHALT PAVEMENT REMOVAL
 - MISCELLANEOUS REMOVAL

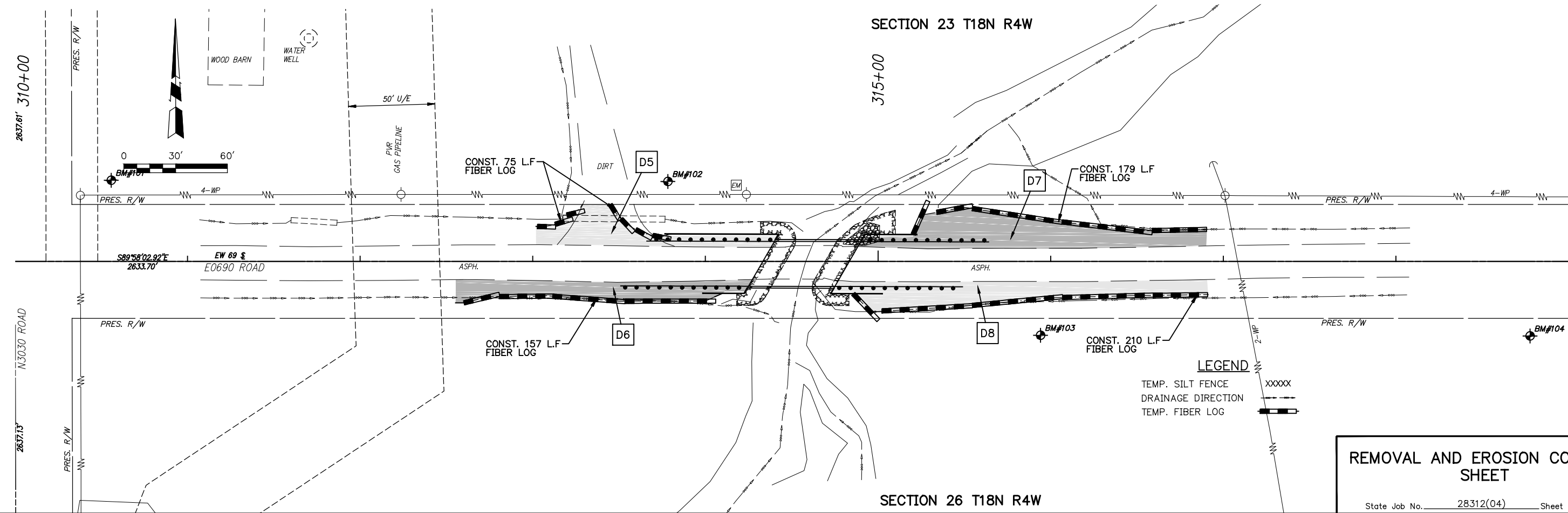
SUMMARY OF DISTURBED DRAINAGE AREAS

DISTURBED AREA NO.	OUTFLOW LOCATION (STA.)	DISTURBED AREA (STATION TO STATION)	DIRECTION TO OUTFALL	DESCRIPTION OF AREA	EROSION CONTROL MEASURES	DISTURBED AREA (AC.)
D1	N/A	STA. 63+88 TO STA. 66+55.58	N. & E.	RDWY & FORESLOPE OF S.H. 74 D	SILT FENCE, FIBER LOGS, AND SOLID SLAB SOD	0.15
D2	66+55.58	STA. 63+88 TO STA. 66+55.58	N. & E.	RDWY & FORESLOPE OF S.H. 74 D	SILT FENCE, FIBER LOGS, AND SOLID SLAB SOD	0.19
D3	N/A	STA. 68+68.42 TO STA. 71+00	S. & W.	RDWY & FORESLOPE OF S.H. 74 D	SILT FENCE, FIBER LOGS, AND SOLID SLAB SOD	0.27
D4	71+00	STA. 68+68.42 TO STA. 71+00	S. & W.	RDWY & FORESLOPE OF S.H. 74 D	SILT FENCE, FIBER LOGS, AND SOLID SLAB SOD	0.28
D5	N/A	STA. 316+91 TO STA. 314+40.67	N. & E.	RDWY & FORESLOPE OF EW 69	FIBER LOGS AND SOLID SLAB SOD	0.03
D6	314+40.67	STA. 316+91 TO STA. 314+40.67	S. & E.	RDWY & FORESLOPE OF EW 69	FIBER LOGS AND SOLID SLAB SOD	0.04
D7	N/A	STA. 314+74.33 TO STA. 316+91	N. & W.	RDWY & FORESLOPE OF EW 69	FIBER LOGS AND SOLID SLAB SOD	0.06
D8	316+91	STA. 314+74.33 TO STA. 316+91	S. & W.	RDWY & FORESLOPE OF EW 69	FIBER LOGS AND SOLID SLAB SOD	0.06

SECTION 26 T18N R4W

SECTION 23 T18N R4W

315+00



- LEGEND**
- TEMP. SILT FENCE
 - DRAINAGE DIRECTION
 - TEMP. FIBER LOG

REMOVAL AND EROSION CONTROL SHEET